

Reconstruction of the Lincoln Avenue Bridge over the NEC Rail Line, an Inactive Rail Yard, and the Assunpink Creek City of Trenton, Mercer County

Public Information Center #1

December 7 – 18, 2020



Engineering | Design | Planning | Construction Management



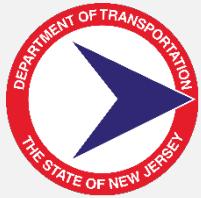
Presentation Overview

- Project Team
- Project Delivery Process
- Project Location / Limits
- Purpose and Need
- Existing Conditions
- Approved Project Plan
- Construction Staging
- Detour
- Project Schedule and Construction Cost Estimate
- Feedback

Project Team



Aaron T. Watson – Deputy Administrator/Director DOT&I
George A. Fallat, PE – County Engineer
Basit A. Muzaffar, PE (Sunny) – Project Manager, Assistant County Engineer



Kyle Skala – Bureau of Local Aid and Economic Development



John Coscia, Jr. – Manager, Office of Project Implementation



Bernard Boerchers, PE, PTOE – Project Manager
William Farrow, PE – Deputy Project Manager

Project Delivery Process

Local Concept Development	Local Preliminary Engineering	Final Design / Right of Way Acquisition	Construction
<p>Purpose and Need Statement</p> <p>Data Collection and Environmental Screening Report</p> <p>Selection of Preliminary Preferred Alternative</p> <p>NEPA Classification</p> <p>Concept Development Report</p> <p>Create Design Communications Report</p>	<p>Approved Design Exception Report</p> <p>Cost Estimates (Final Design ROW and Construction)</p> <p>Approved Environmental Document</p> <p>Approved Project Plan</p> <p>Preliminary Engineering Report</p> <p>Update Design Communications Report</p>	<p>Construction Contract Document and PS&E Package</p> <p>Environmental Reevaluations</p> <p>Environmental Permits</p> <p>Acquisition of ROW</p> <p>Update Design Communications Report</p>	<p>Completed Construction</p> <p>As-Builts</p> <p>Update and Finalize Design Communications Report</p> <p>Close-Out Documentation</p>

Project Location



Project Site

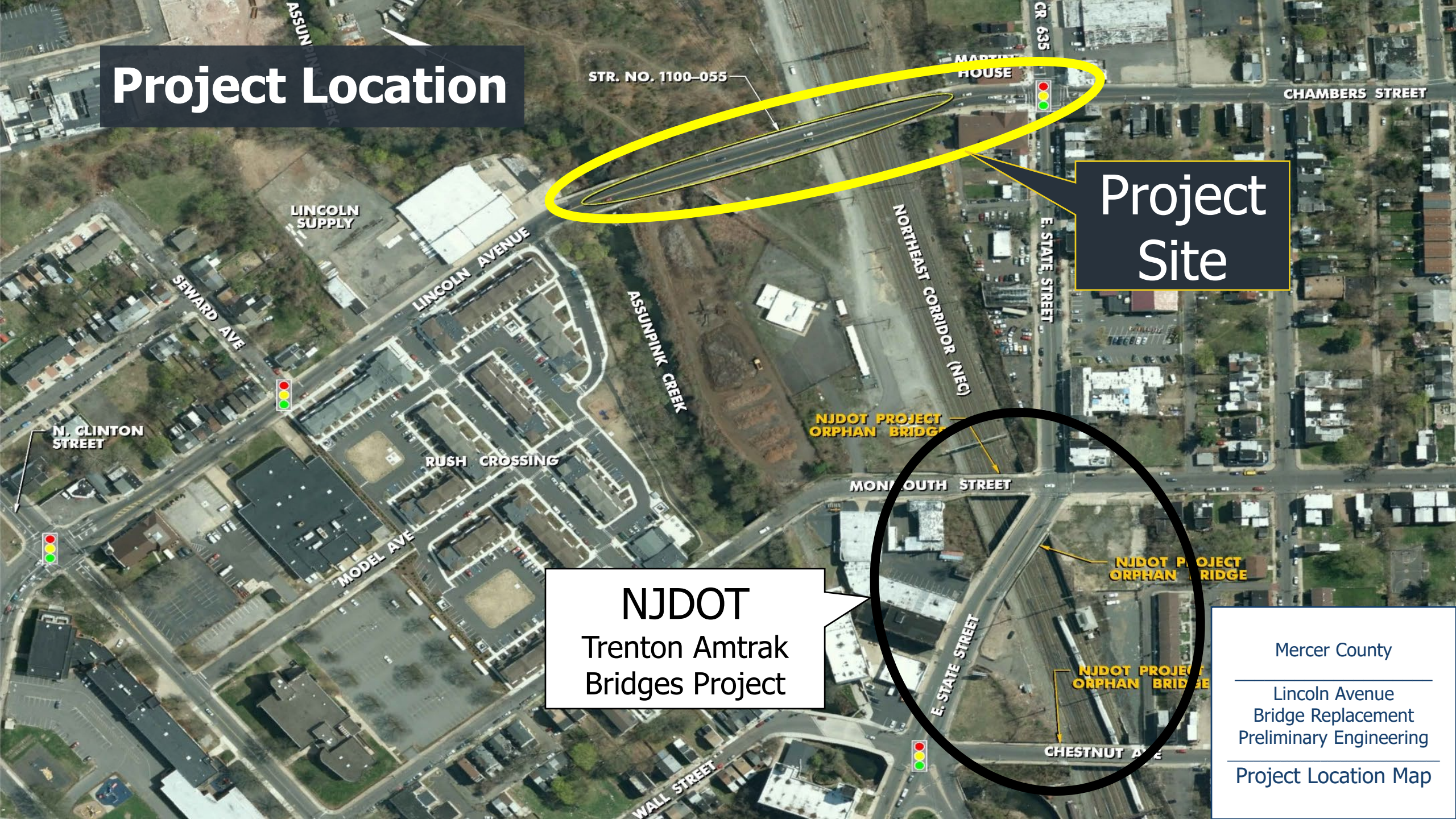
NJDOT
Trenton Amtrak
Bridges Project



Mercer County

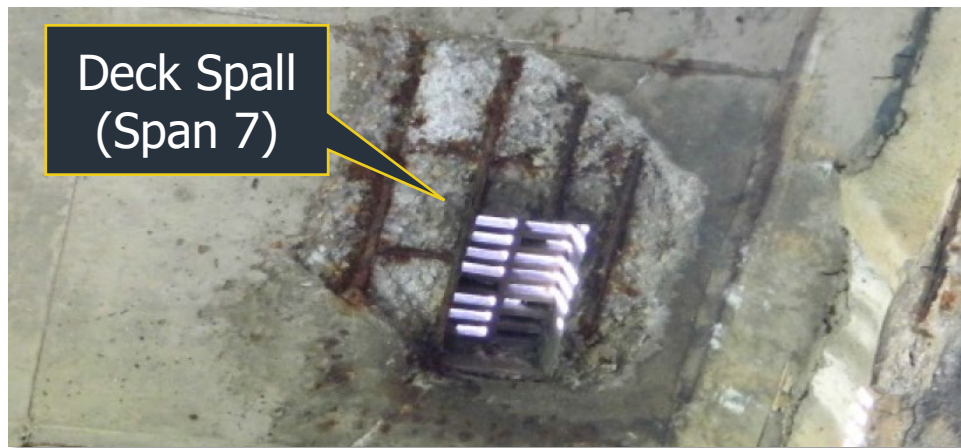
Lincoln Avenue
Bridge Replacement
Preliminary Engineering

Project Location Map



Purpose and Need

- Purpose is to replace Structure No. 1100-055 (County No. 140.9)
- Rated **3-Serious** due to condition of the superstructure
 - Deck rating: 4-Poor
 - Superstructure rating: 3-Serious
 - Substructure rating: 5-Fair
- Sufficiency Rating of **46.2**



Existing Conditions (Bridge)

Structural Information and Deficiencies

- Carries Lincoln Avenue over Amtrak NEC and Assunpink Creek
- Built in 1931
- Reconstructed in 1965
- Comprised of 8 simple spans
- Steel through-girders (fracture critical)
- Steel floorbeams and concrete deck
- Severely corroded steel
- Large areas spalled / delaminated concrete
- Substandard vertical underclearance



Existing Conditions (Roadway)



Roadway Information and Deficiencies

- 2 lane, urban minor arterial
- Not posted (25 mph)
- 18-foot wide lanes, no shoulders (CSDE)
- 6-foot wide sidewalk on either side
- Roadway/pedestrian lighting
- Broken back horizontal curves
- Substandard vertical stopping sight distance
- Substandard cross slope
- Clear zone (14-16`) with obstructions

Existing Conditions (Rail)












Railroad Operations

- Amtrak Northeast Corridor (NEC)
 - Amtrak
 - NJ Transit
 - Freight
- 5 mainline and 1 siding electrified tracks
- Overhead catenary lines and feeder cables
- Inactive NJ Transit tracks and old platform



Existing Conditions (Environmental Constraints)

LEGEND

-  NJDEP Known Contaminated Site List
-  Special Concern Habitat (Great Blue Heron Foraging)
-  Brownfield Development Area (NJDEP 2013)
-  Stream (NJDEP SWQS FW2-NT)
-  Wetlands 2007 (NJDEP LU/LC)
-  FEMA/NJDEP Flood Hazard Area
-  Riparian Zone (50 Ft)
-  Floodway Limit
-  Pennsylvania Railroad New York to Philadelphia Historic District
-  Historic Fill Location
-  Historic Property (Eligible Status)

USGS STREAM GAUGE
STATION

ASSUNPINK CREEK (FW2-NT)
50' RIPARIAN ZONE

LINCOLN AVE

INACTIVE NJT TRACKS

ASSUNPINK CREEK

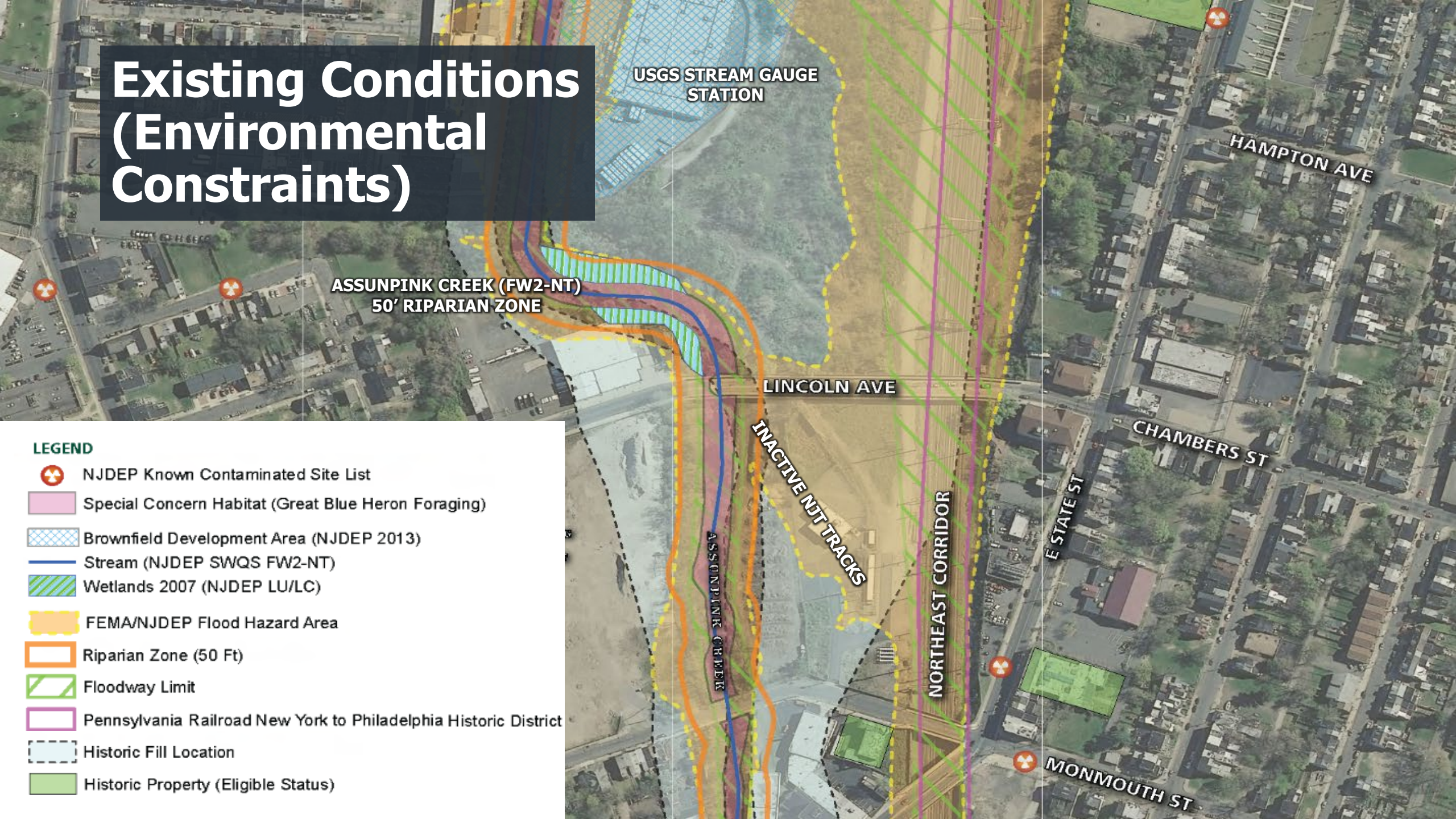
NORTHEAST CORRIDOR

E STATE ST

CHAMBERS ST

HAMPTON AVE

MONMOUTH ST



Existing Conditions (Utilities)

10-4" Electrical Conduit

20" x 8" Gas Line

30" Water CIP

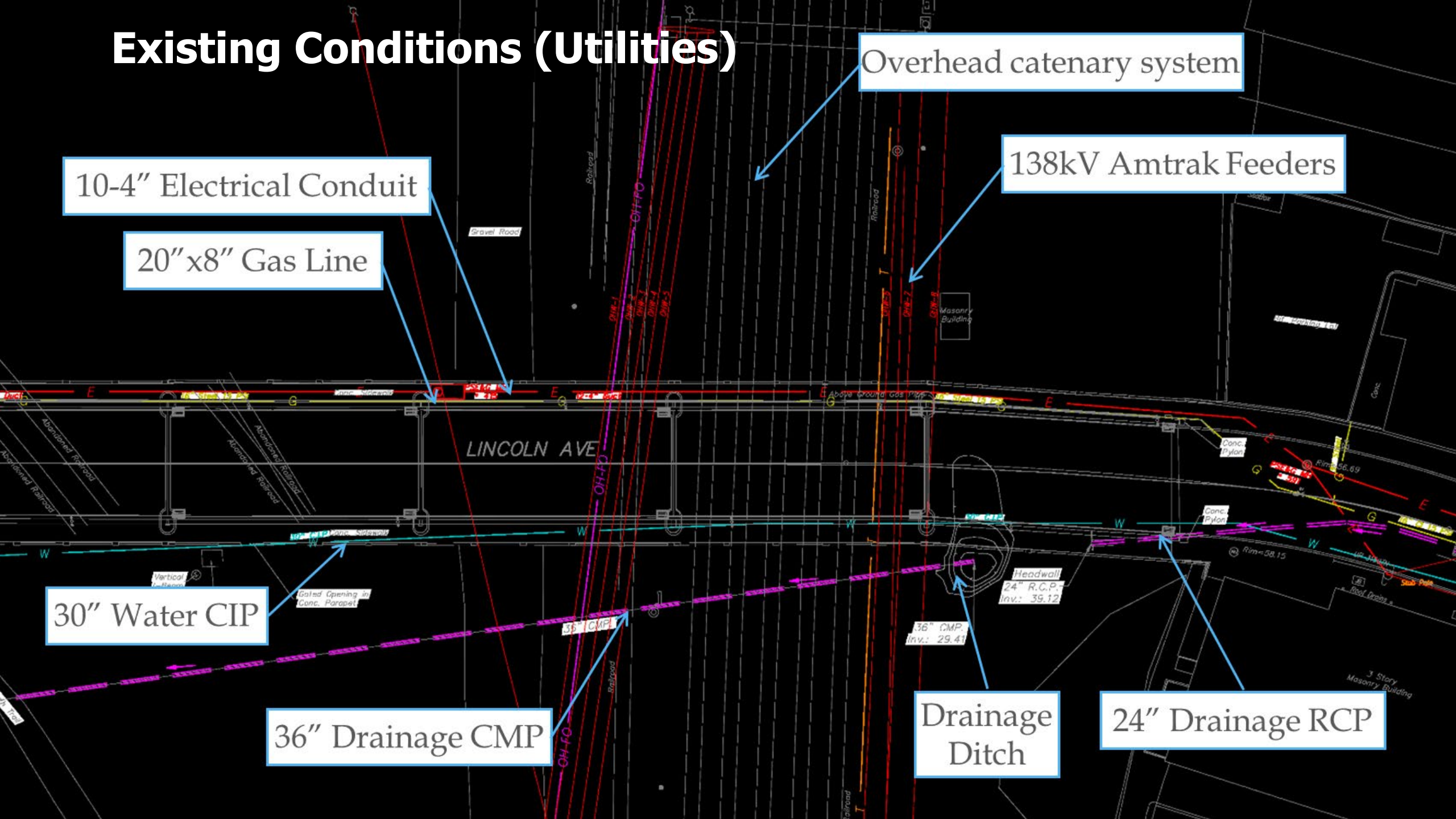
36" Drainage CMP

Overhead catenary system

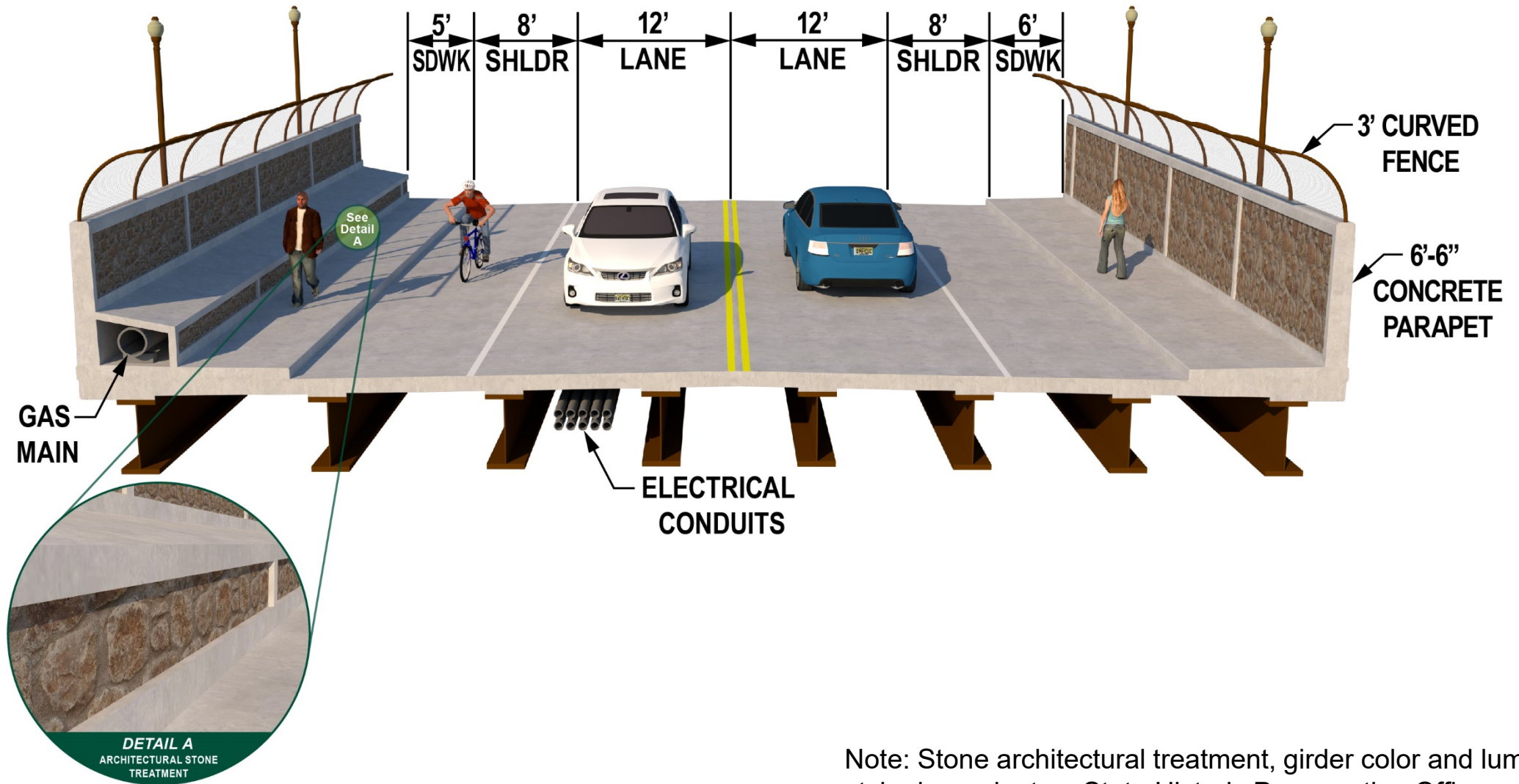
138kV Amtrak Feeders

Drainage Ditch

24" Drainage RCP

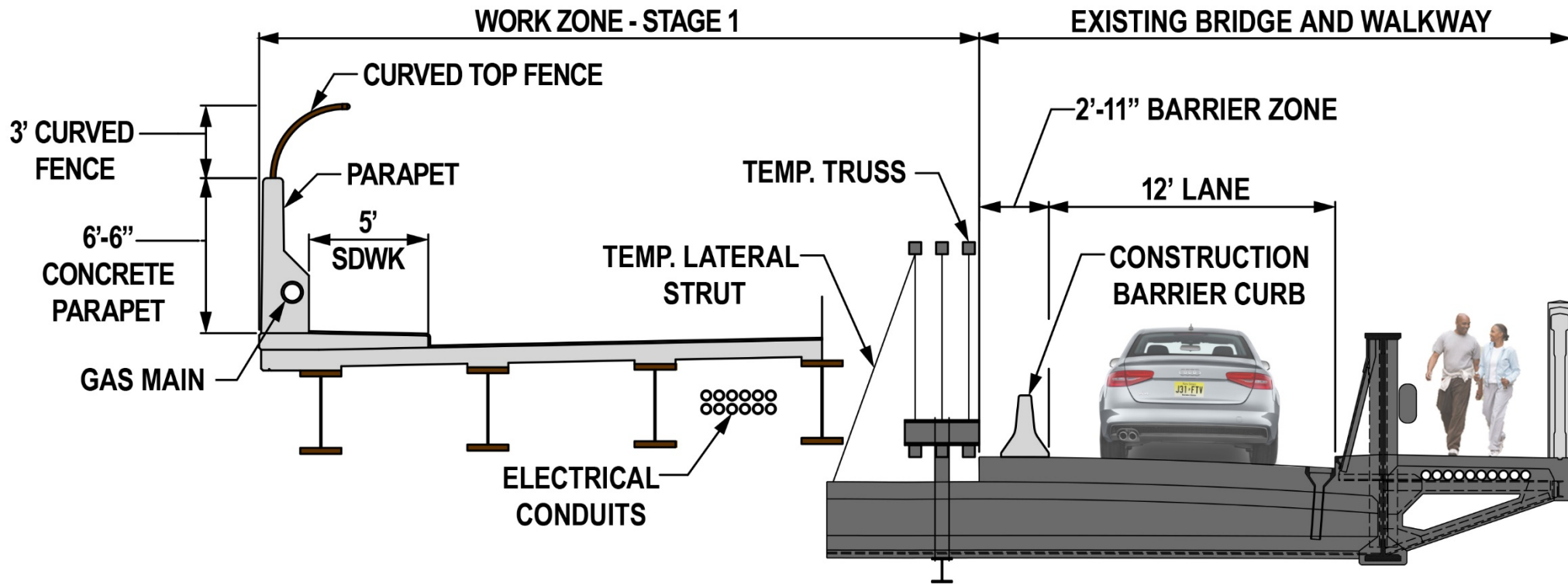


Approved Project Plan



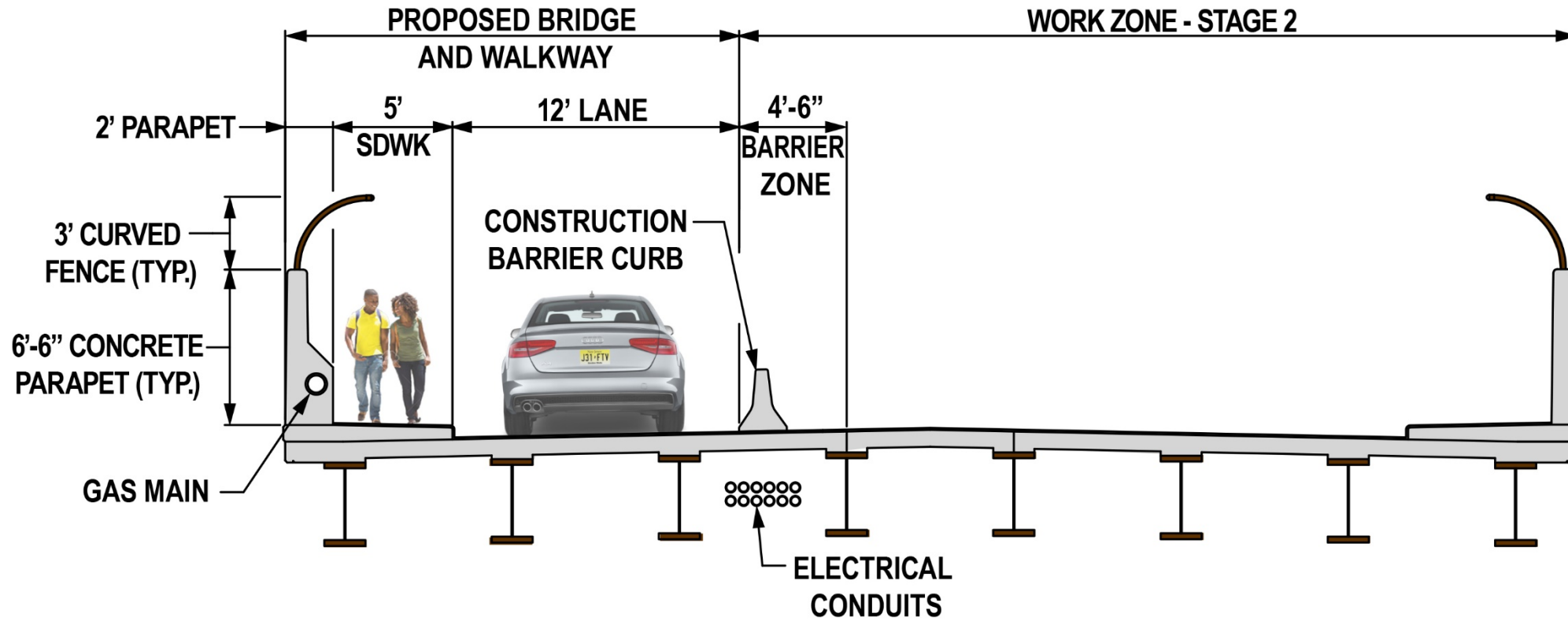
Note: Stone architectural treatment, girder color and luminaire style dependent on State Historic Preservation Office approval

Construction Staging



STAGE 1 - CONSTRUCTION

Construction Staging





STAGE 2 - CONSTRUCTION

Approved Project Plan (Detour)



LEGEND

-  Detour EB Traffic
-  Maintain WB Traffic One-Way

Project Schedule and Construction Cost Estimate



Estimated Construction Cost:
\$38 Million Dollars (in 2020 dollars)
Estimated Right of Way Costs is \$1 Million Dollars

Public Feedback

**Submit Questions, Comments and Suggestions
at the link below:**

For more information contact:

George Fallat, P.E., County Engineer

DOT&I Mercer County, Division of Engineering

640 South Broad Street

Trenton, NJ 08650-0068

Email: gfallat@mercercounty.org